

REPAIR & OVERHAUL SERVICES

Compressors

- Reciprocating, Rotary Screw/Vane, Centrifugal

Blowers

- Positive Displacement (Lobe, Screw), Centrifugal, Regenerative

Pumps

- Centrifugal, Gear, Progressive Cavity, Diaphragm, Peristaltic, Vane

Air Dryers

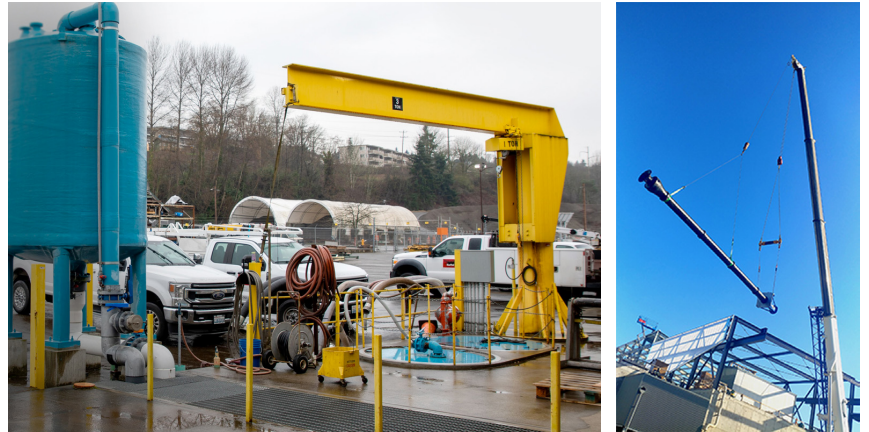
- Refrigerated, Regenerative, Deliquescent, Membrane

Vacuum Systems

- Rotary Lobe, Claw, Vane, Screw, Liquid Ring, Screw

Mechanical Seals

- Single, Dual, Dry Run Gas



TESTING FACILITY

- Capable of flows up to 2,500 gpm
- Capable of pressure up to 150 psig
- 120 volt up to 5 hp
- 208/230 volt up to 25 hp
- 460 volt up to 200 hp
- Variable Frequency Drive (VFD) for 460 volt up to 125 hp
- Magnetic Flow Meters for 3" and 8" lines up to 2,500 gpm
- Standards can be adjusted to meet specific customer requests
- Submersible test pits
- Blower test up to 500 hp

ADDITIONAL SERVICES

- Field Service & Installation
- Local Inventory
- Balancing
- Field Start-up and Troubleshooting
- Service Agreements
- Full Machine Shop
- Vertical Turbine Rebowling
- Vibration Analysis
- Gearbox Repair
- Shaft Alignment
- Short run Production
- Training Seminars
- Air Audits
- VFD Retrofits
- Babbit Bearings

B & K



24/7 EMERGENCY SERVICE

Locations:

- Seattle, WA
- Vancouver, WA
- Spokane, WA
- Anchorage, AK
- Kennewick, WA

Phone:
(800) 767-6700

E-mail:
sales@b-k.com

Website:
www.b-k.com